

## FLIGHT CREW REST COMPARTMENT - EMERGENCY HATCH

EASA OSD

Applicable to: ALL

### **DESCRIPTION**

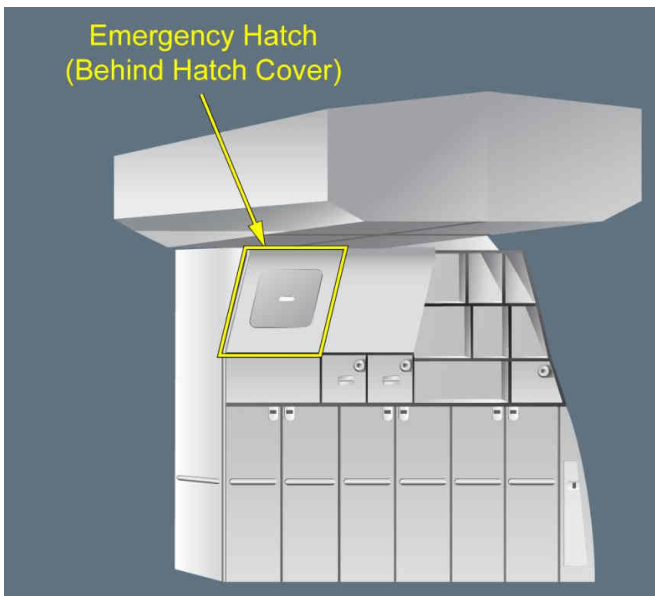
In case of an emergency situation, a quick evacuation of the Flight Crew Rest Compartment (FCRC) could be essential. The preferred evacuation path is through the door.

If the way through the door is blocked (e.g. by a fire), there is a second evacuation path through the emergency hatch.

### **EMERGENCY HATCH LOCATION**

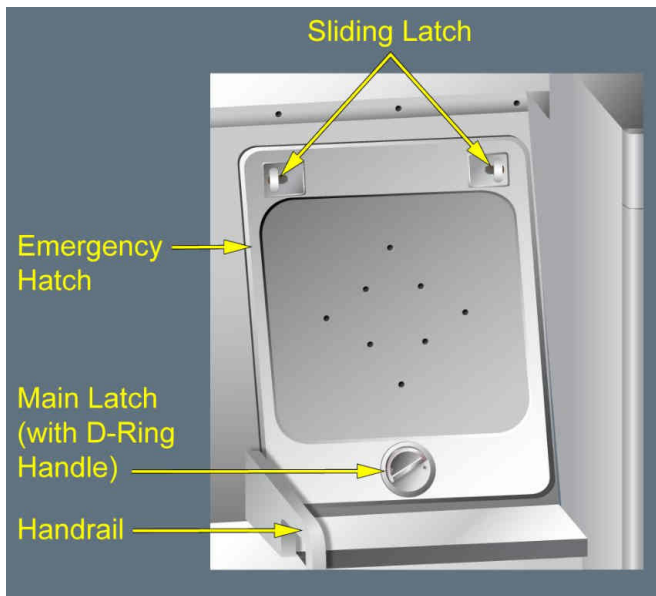
To see the emergency hatch location inside the FCRC: *Refer to Flight Crew Rest Compartment - The Interior.*

Access to the Emergency Hatch from the Cabin Side (Galley)

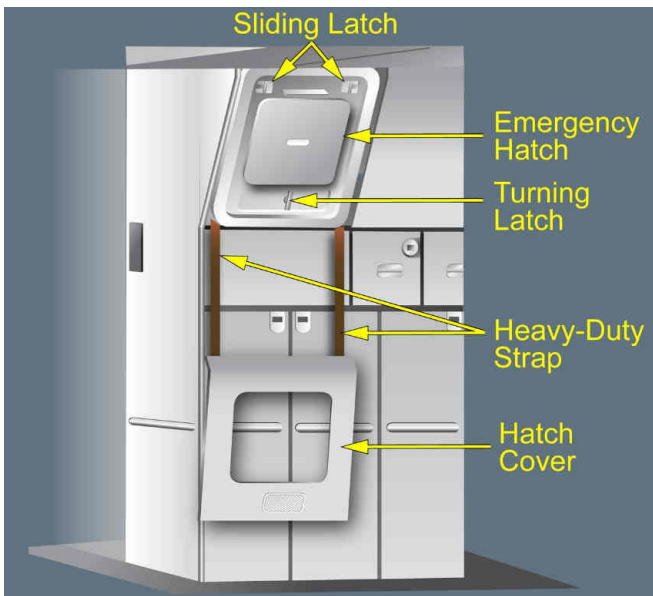


## MAIN COMPONENTS OF THE EMERGENCY HATCH

Main Components of the Emergency Hatch (Inside the FCRC)



Main Components of the Emergency Hatch (Cabin Side)



Note: In the illustrations showing the main components of the emergency hatch the hatch frame is not mentioned. The hatch frame is behind the FCRC wall panels within the lining.

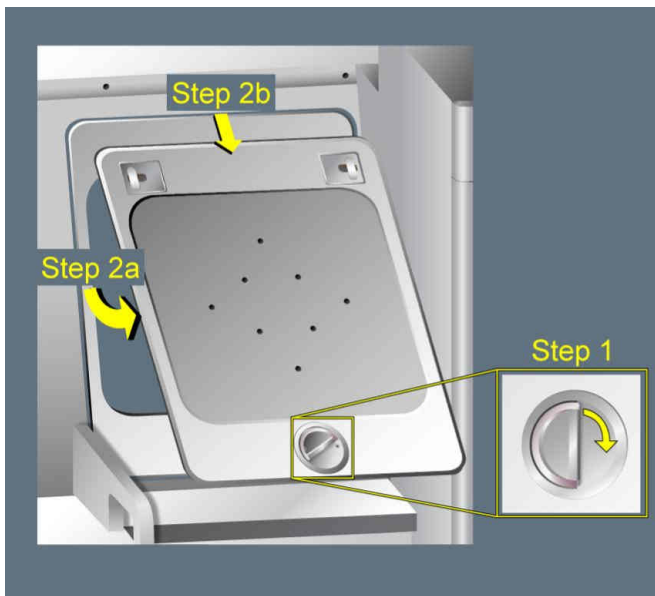
The emergency hatch is attached to the hatch frame. The latches keep the emergency hatch in the hatch frame.

**HOW TO OPERATE THE EMERGENCY HATCH**

**HOW TO OPERATE THE EMERGENCY HATCH FROM INSIDE THE FCRC**

1. On the emergency hatch: Turn the D-ring handle of the main latch clockwise (1/4-turn) until the emergency hatch is unlocked.

How to Remove the Emergency Hatch from Inside the FCRC



2. Remove the emergency hatch:

**CAUTION** TO PREVENT THE EMERGENCY HATCH FROM FALLING DOWN, ALWAYS USE BOTH HANDS TO HOLD THE EMERGENCY HATCH WHILE REMOVING IT.

- a. Pull and hold the D-ring handle to swing the emergency hatch inside the FCRC.
- b. Swing the emergency hatch into its horizontal position and pull at the D-ring handle to unhook the upper side of the emergency hatch from the hatch frame.

Note: If the emergency hatch jams and there is no chance to unhook it: Swing the emergency hatch back into its original position (there is no need to turn the D-ring handle counter-clockwise to lock the emergency hatch again). Then follow the instructions for a jammed emergency hatch. See : **HOW TO REMOVE A JAMMED EMERGENCY HATCH (FROM INSIDE THE FCRC).**

- c. Put the emergency hatch aside to have access to the hatch cover.
3. Use one foot to kick the hatch cover down.

Note: The hatch cover will not fall down onto the floor. Two heavy-duty straps hold it in a hanging position.

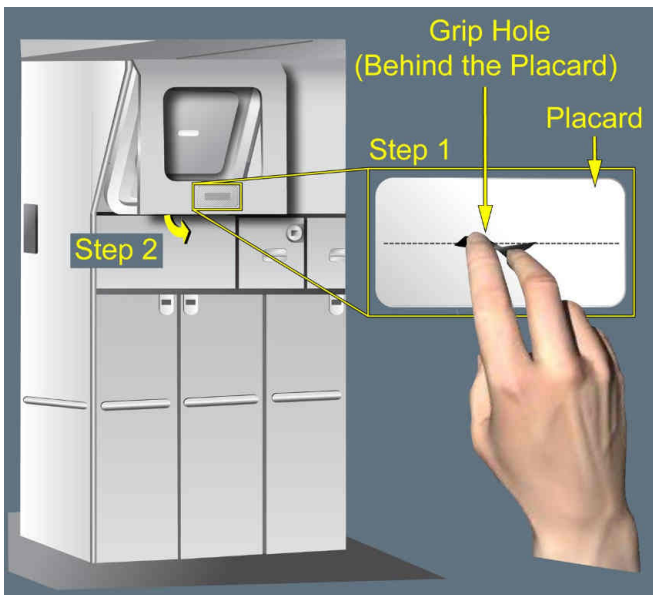
4. Leave the FCRC through the hole.

Note: To ease the way down into the cabin, grasp the handrail beside the hole and additionally use the hanging hatch cover as a step.  
By design, the hatch cover and the heavy-duty straps are strong enough to carry an adult person.

## HOW TO OPERATE THE EMERGENCY HATCH FROM THE CABIN SIDE

1. With one hand:  
Grasp the hatch cover.
  - a. Push the hand through the placard into the grip hole of the hatch cover.
  - b. Grasp the frame of the grip hole.

### How to Remove the Hatch Cover from the Cabin Side



2. With the hand in the grip hole of the hatch cover:  
Pull at the frame of the grip hole in order to remove the hatch cover.
3. Lower the hatch cover until it hangs down entirely on the two heavy-duty straps.

Removed Hatch Cover

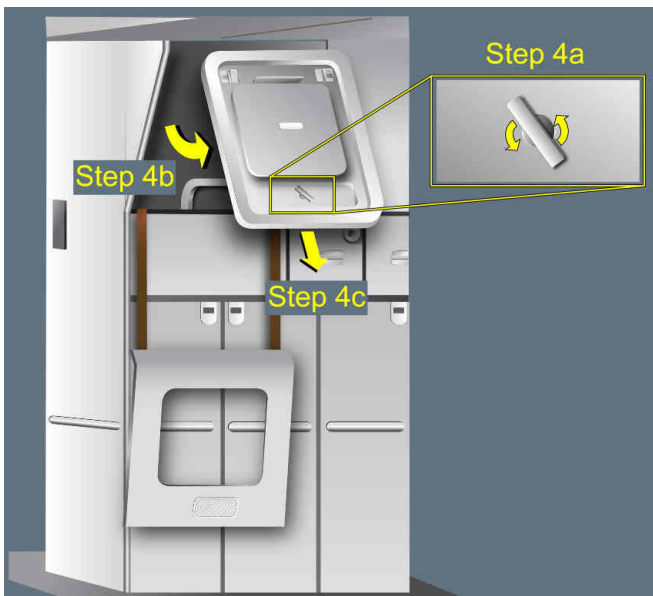


4. Remove the emergency hatch:

**CAUTION**

TO PREVENT THE EMERGENCY HATCH FROM FALLING DOWN,  
ALWAYS USE BOTH HANDS TO HOLD THE EMERGENCY HATCH  
WHILE REMOVING IT.

How to Remove the Emergency Hatch from the Cabin Side



- a. Turn the handle of the turning latch counter-clockwise (1/4-turn) until the emergency hatch is unlocked.

Normally the emergency hatch swings automatically towards the cabin side into its vertical position.

If this is not the case, pull at the handle of the turning latch in order to swing the emergency hatch manually into the cabin.

- b. Swing the emergency hatch into its horizontal position, and pull at it to unhook its upper side from the hatch frame.

**Note:** *If the emergency hatch jams and there is no chance to unhook it: Swing the emergency hatch back into its original position and turn the handle of the turning latch clockwise to lock the emergency hatch again. Then follow the instructions for a jammed emergency hatch.*  
*See : HOW TO REMOVE A JAMMED EMERGENCY HATCH (FROM THE CABIN SIDE).*

- c. Put the emergency hatch aside to have access to the FCRC.

5. Urge the FCRC occupants to come through the hole into the cabin.



*Note: If the FCRC occupants do not come through the hole they may be unconscious. In this case, refer to the emergency procedure on how to rescue the FCRC occupants.*

## HOW TO REMOVE A JAMMED EMERGENCY HATCH

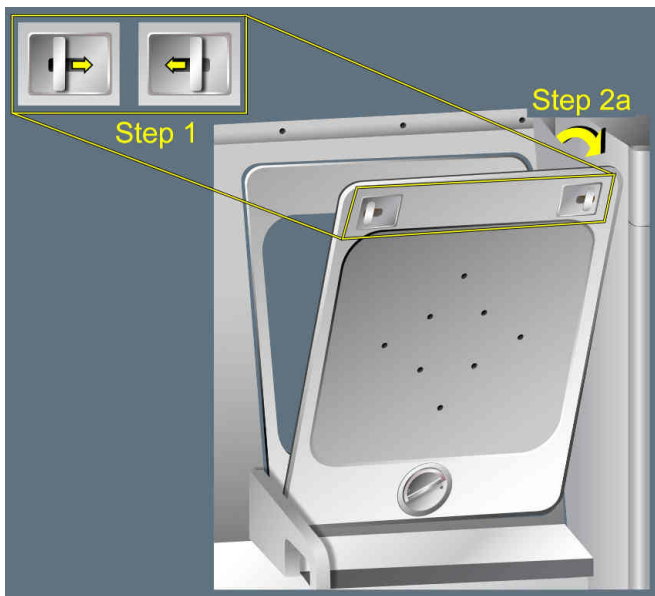
If the emergency hatch jams and there is no chance to unhook it, follow the instructions below.

### HOW TO REMOVE A JAMMED EMERGENCY HATCH FROM INSIDE THE FCRC

**CAUTION** TO PREVENT THE EMERGENCY HATCH FROM FALLING DOWN, ALWAYS USE BOTH HANDS TO HOLD THE EMERGENCY HATCH WHILE REMOVING IT.

1. Shift the handles of both sliding latches inwards to unlock the jammed emergency hatch.

How to Remove a Jammed Emergency Hatch from Inside the FCRC



2. Remove the emergency hatch:
  - a. Use the handles of the latches (sliding latches/D-ring latch) to swing the upper side of the emergency hatch downwards into horizontal position.
  - b. Pull the emergency hatch off the hatch frame.
3. Put the emergency hatch aside to have access to the hatch cover.

4. Use one foot to kick the hatch cover down.

Note: The hatch cover will not fall down onto the floor. Two heavy-duty straps hold it in a hanging position.

5. Leave the FCRC through the hole.

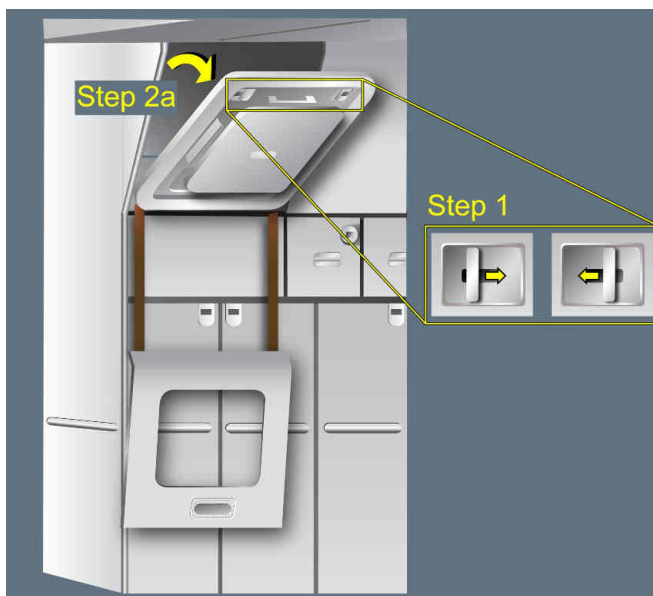
Note: To ease the way down into the cabin, grasp the handrail beside the hole and additionally use the hanging hatch cover as a step.  
By design, the hatch cover and the heavy-duty straps are strong enough to carry an adult person.

## HOW TO REMOVE A JAMMED EMERGENCY HATCH FROM THE CABIN SIDE

**CAUTION** TO PREVENT THE EMERGENCY HATCH FROM FALLING DOWN, ALWAYS USE BOTH HANDS TO HOLD THE EMERGENCY HATCH WHILE REMOVING IT.

1. Shift the handles of both sliding latches inwards to unlock the jammed emergency hatch.

How to Remove a Jammed Emergency Hatch from Cabin Side



2. Remove the emergency hatch:

**COCKPIT****FLIGHT CREW REST COMPARTMENT**

## DESCRIPTION AND OPERATION

- a. Use the handles of the latches (sliding latches/turning latch) to swing the upper side of the emergency hatch downwards into its horizontal position.
  - b. Pull the emergency hatch off the hatch frame.
3. Put the emergency hatch aside to have access to the FCRC.
  4. Urge the FCRC occupants to come through the hole into the cabin.

Note: *If the FCRC occupants do not come through the hole they may be unconscious. In this case, refer to the emergency procedure on how to rescue the FCRC occupants.*