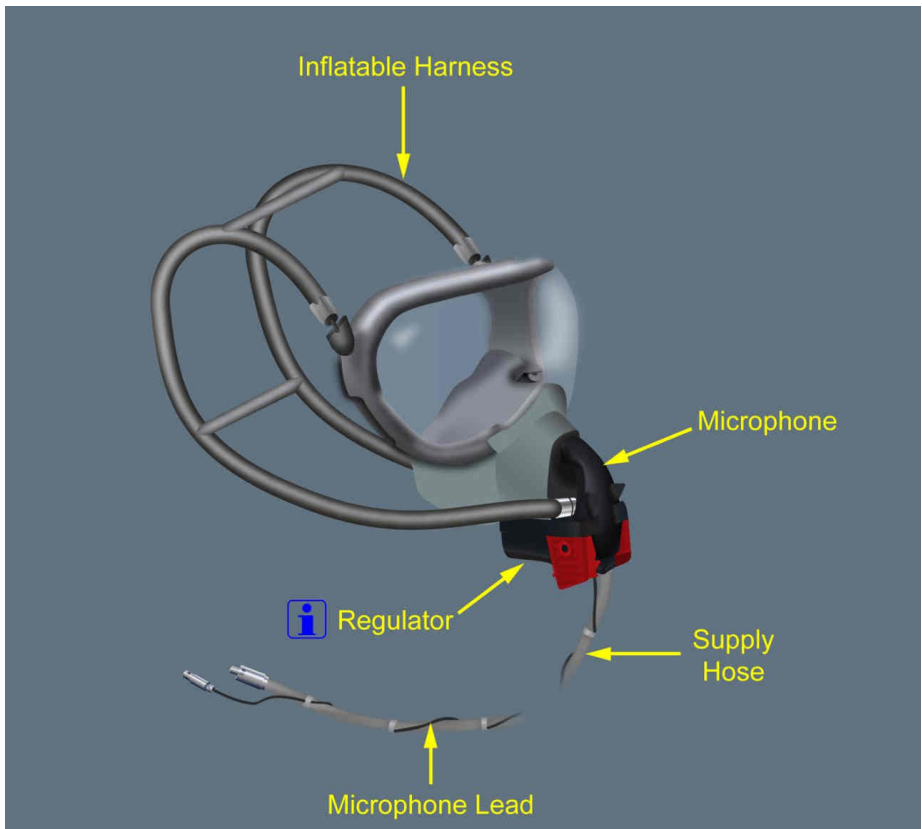


**FLIGHT CREW OXYGEN MASK**

EASA OSD

Applicable to: ALL

Flight Crew Oxygen Mask

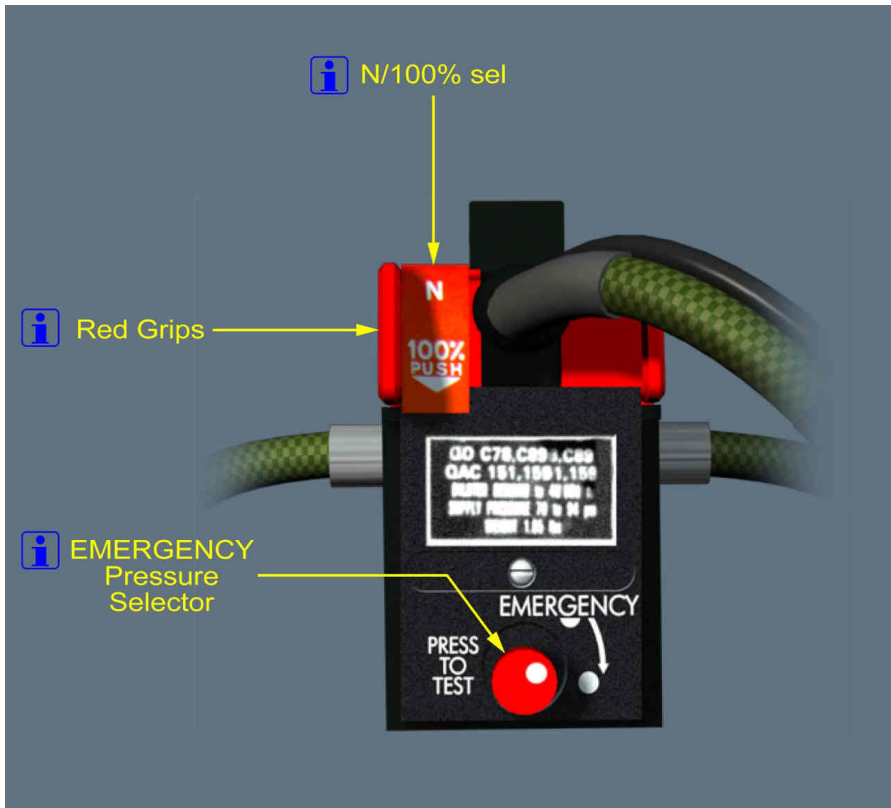


**CONTROLS AND INDICATORS**

Applicable to: ALL

EASA OSD

**OXYGEN MASK REGULATOR**

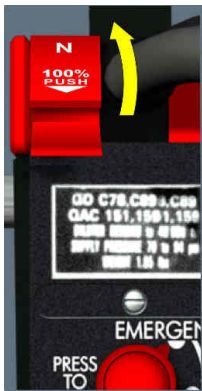


**RED GRIPS**



When the red grips are pressed together, the harness inflates.  
When the red grips are released, the harness deflates.

**100% / NORM SELECTOR**



When the flight crew selects the "N" position, the system supplies the mask with a mixture of ambient air from the cockpit and pure oxygen.

## COCKPIT COCKPIT OXYGEN

### FIXED OXYGEN - COCKPIT MASKS



When the flight crew selects the "100%" position, the oxygen system supplies the mask with 100% pure oxygen.

EASA OSD

### EMERGENCY selector

The supply of overpressured oxygen prevents smoke, noxious gas, ashes from entering into the mask. The flight crew either presses or turns the **EMERGENCY** selector to supply the mask with overpressured oxygen.



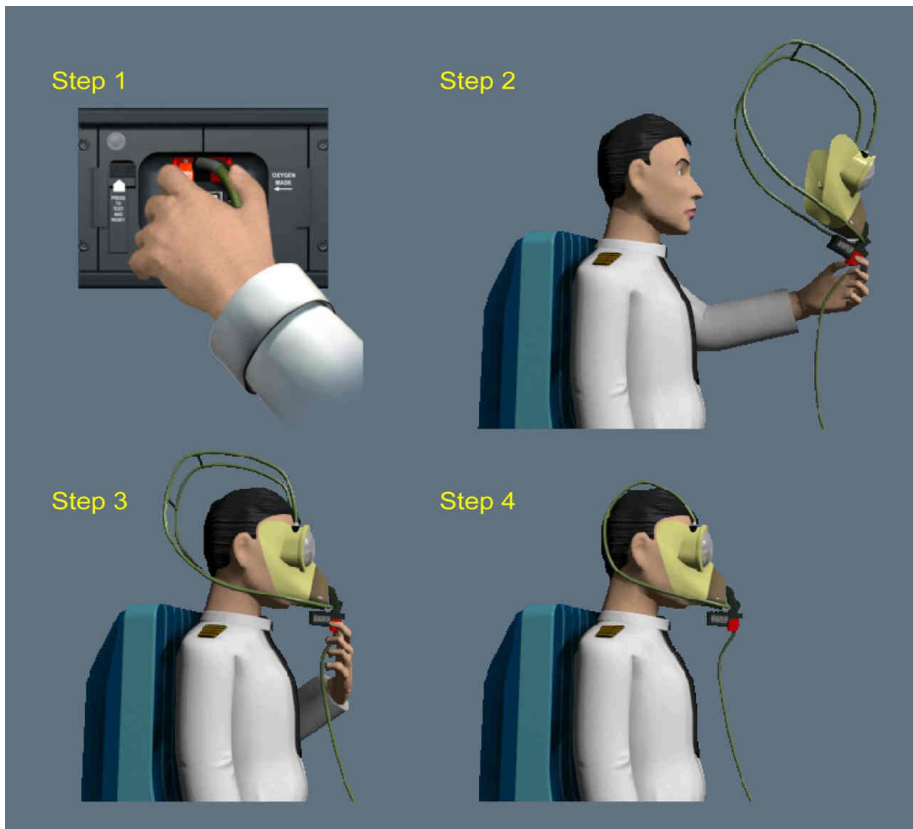
Temporary supply: when the flight crew presses the selector, overpressured oxygen is supplied into the mask. Overpressure oxygen supply stops when the selector is released.  
Continuous supply: when the flight crew turns the selector, overpressured oxygen is supplied continuously.

***Note:** If the cabin altitude is above 30 000 ft, overpressured oxygen is automatically supplied into the mask regardless the position of the **EMERGENCY** selector.*

## HOW TO DON THE MASK

EASA OSD

Applicable to: ALL



### **STEP 1 AND 2**

Remove the mask from its stowage box, by squeezing the red grips toward each other, and pulling the mask out of its box.

The stowage box opens, and the:

- Mask is immediately supplied with oxygen
- Mask harness immediately inflates
- Mask microphone is active.

**COCKPIT****COCKPIT OXYGEN**

## FIXED OXYGEN - COCKPIT MASKS

**STEP 3 AND 4**

Don the mask, and release the red grips. This will deflate the mask harness, and keep the mask in position.

Note: *The visor of each mask may have a protective film to help prevent scratches. This film is optional, and can be removed at any time.*